

PROTOCOL FOR RE-OPENING THE CHURCH

*Everyone must be fever free

If anyone feels sick, sneezing, coughing they will not be admitted into the church building-No exceptions

- Worshippers should bring own masks, gloves and Holy Communion elements; juice/water and crackers/bread-also after service taking any garbage out with them and placing in proper receptacle

1. Pre-Opening Prep

- Determine number of cars/people allowed-18 cars/17 families of 4 or less-or equivalent
- Plan for adequate social distancing and protection protocol-signs/arrows/chains-ropes
- Plan how to handle overflow-per Governor/GNJUMC guidelines
- Letters/emails/website communication to explain what to expect and what to do
 - Masks and gloves must be worn by everyone from exiting their cars to re-entering their cars after the service.
 - Ushers will make available masks and gloves for anyone who does not have any
 - No physical contact outside your family unit
- Hold a trial run of a service with church leaders and designated ushers on June 28th prior to official opening

2. Parking – Entering – Exiting

- Cone or mark off every other parking spot-directed by parking attendant (Cones may be moved as numbers increase)
- Everyone to wear masks when exiting cars in lot. * If need be parking attendant will have mask and gloves in baggy to place on hood of vehicle for each person
- Mark off 6-foot markings outside the sanctuary door for parishioners waiting to be escorted to their seats in the sanctuary
- Sanctuary door will be left open until service starts then closed by usher and reopened by usher before service is over No fans to keep limited air contamination, but air conditioning will be on because of floor registers.
- Everyone will enter and exit the church through the left side front doors. All other access into building will be roped off and locked (still providing emergency exit if needed)
- Ushers will give guidelines for worship, have pre-sealed communion elements for those who do not bring their own and will escort families to their seats. There is to be no wondering once seated
- People will be seated on alternate sides of each pew from #1 to #18 up to four individuals. If a family has more than four individuals, the next pew must accommodate a six-foot social distance. This may allow for only one or two or even no one in the following pew.

Worshippers will stay within their designated area and children will be kept seated with adults

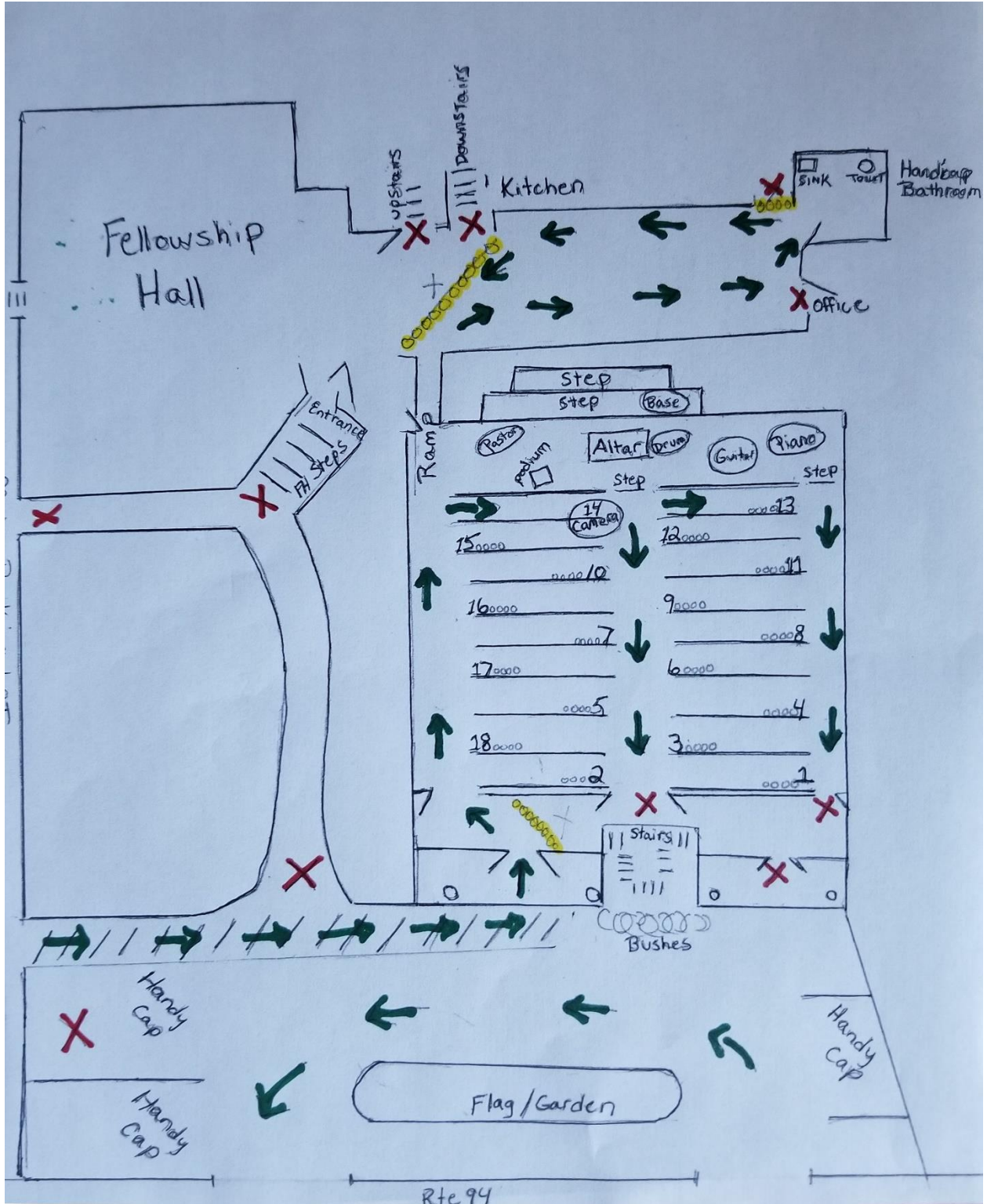
- h. The balcony will be used exclusively for media tech personnel
 - i. Once the service has begun, no one can enter the church. This will ensure control over traffic flow and help prevent accidental encroachment.
 - j. No one is to be allowed in any other areas of the church, except to use the one bathroom open for use. (the handicap bathroom). All other areas will be roped off.
 - k. Ushers will be at the front doors, in the parking lot, and at the door leading into the fellowship hall (in case someone needs to use the bathroom).
 - l. All worship media will be projected on screens; No books, papers, pencils or any other items in pews
 - m. At the end of the service people will exit their pews at the direction of the ushers who will release on pew at a time-reverse #18 to #1. Please be patient. People will be let out opposite from coming in. First will be last and last will be first to avoid any contact with others.
 - n. People are asked to leave the church, the same way they came in, keeping social distancing with wearing masks and go directly to their cars so others can pass through safely. If anyone stays in the parking lot, they must yield to those wanting to enter their vehicles and leave.
3. Service
- a. There will be no hymnals, bibles, bulletins or other documents in the pews.
 - b. All service information will be shared on the TV screens
 - c. No fans but air conditioning will be used
 - d. Singing will be done with masks left on
 - e. Parishioners will be asked to bring their own communion elements – (We will have additional bagged prepackaged elements for those who do not have them handed out upon entrance to sanctuary) Holy Communion will be celebrated with in each family unit in their pew without contact of others.
 - f. Offering will continue online and by mail to avoid contact
 - g. Initially there will be no Sunday School
 - h. Children are to remain in their pew during the entire service
 - i. If rest room is needed while in service one person at a time may go out to the one handicap bathroom with a cleaning happening before another may use the restroom
4. Worship team
- a. Praise band/Liturgist will be masked and seated up on altar at least 6 feet from one another
 - b. Pastor will also be masked and seated on altar/or in first pew 6 feet from praise band
 - c. Separate microphones will be used by all in their designated areas
 - d. Video person will be seated in pew #14 to avoid contact with others
5. Sanitizing
- a. The entire Sanctuary, Narthex and bathroom will be sanitized prior to the church service and then again before next service
 - b. * There will be masks, gloves given out in parking lot and hand sanitizer in the Narthex
 - c. * Masks and gloves will be prepackaged into zip lock bags to hand out as needed

- d. It will be the usher's responsibility who is stationed to watch the open Fellowship Hall door to sanitize the bathroom after each use.
- e. Sanitizing spray and paper towels will be in the Narthex and hall to restroom for ushers to use as needed
- f. The air conditioner will be on but ceiling fans will not be used so that air circulation is not enhanced.
- g. A distance of no less than 6 feet will be required the time from parking lot to return to parking lot and everywhere in between

If You Feel You Cannot Comply:

- Anyone who does not feel they can comply to all the above mentioned and any other regulation that may come up is asked to please stay home for your and everyone else's safety. (Pastor Connie will be the person to enforce everyone is safe and has the least chance of contamination.)
- Anyone who has a compromised immune system or does not feel safe in public are also asked to please stay home for your and other's safety
- We will be continuing our online service that can continue being viewed on Vernon United Methodist Face book Live

Sanctuary Seating Diagram



Parking Lot Diagram

